



PUBLIC INFORMATIONAL MEETING

THURSDAY MARCH 11, 2010

AT

WORCESTER TECHNICAL HIGH SCHOOL

**One Skyline Drive
Worcester, MA 01605**

6:30 P.M.

FOR THE PROPOSED

**BRIDGE REPLACEMENT OF THE KENNETH F. BURNS MEMORIAL BRIDGE
ROUTE 9 OVER LAKE QUINSIGAMOND
PROJECT 604729**

BETWEEN THE TOWN OF SHREWSBURY AND CITY OF WORCESTER

COMMONWEALTH OF MASSACHUSETTS
MASSACHUSETTS DEPARTMENT OF TRANSPORTATION

LUISA PAIEWONSKY
HIGHWAY DIVISION ADMINISTRATOR

FRANK A. TRAMONTOZZI, P.E.
CHIEF ENGINEER

**COMMONWEALTH OF MASSACHUSETTS
MASSACHUSETTS DEPARTMENT OF TRANSPORTATION-HIGHWAY DIVISION**

NOTICE OF PUBLIC INFORMATION MEETING

**Shrewsbury-Worcester: Route 9 over Lake Quinsigamond - Proposed Kenneth F. Burns Memorial
Bridge Replacement**

Project File No. 604729

A Public Information Meeting will be held by MassDOT-Highway Division to discuss the Proposed Kenneth F. Burns Memorial Bridge Replacement Project in Shrewsbury, and Worcester MA.

WHERE: Worcester Technical High School – Conference Center
One Skyline Drive
Worcester, MA 01605

WHEN: Thursday, March 11, 2010 @ 6:30 PM

PURPOSE: The purpose of this meeting is to provide the public with the opportunity to become fully acquainted with the proposed bridge replacement alternatives of Bridge No. S-14-001=W-44-018, Route 9 over Lake Quinsigamond. Following the presentation, MassDOT staff will lead a discussion to answer questions and gather public comment on the alternatives. All views and comments received at the meeting will be carefully reviewed and considered to the maximum extent possible.

PROPOSAL: The project involves the replacement of the Kenneth F. Burns Memorial Bridge, Route 9 over Lake Quinsigamond. The proposed bridge structure will have three travel lanes in each direction, left and right turning lanes at each approach, bicycle accommodating shoulders and sidewalks in each direction. The proposed work will include the preparation of an Environmental Assessment (EA) in accordance with the National Environmental Policy Act (NEPA) and Environmental Notification Form (ENF) that complies with the Massachusetts Environmental Policy Act (MEPA) and its associated regulations (301 CMR 11.00).

A secure right-of-way is necessary for this project. Acquisitions in fee and permanent or temporary easements may be required. The Commonwealth of Massachusetts is responsible for acquiring all needed rights in private or public lands. MassDOT's policy concerning land acquisitions will be discussed at this meeting.

Written views received by MassDOT subsequent to the date of this notice and up to five (5) days prior to the date of the meeting shall be displayed for public inspection and copying at the time and date listed above. Plans will be on display one-half hour before the meeting begins, with an engineer in attendance to answer questions regarding this project. A project handout will be made available on the MassDOT website listed below.

The community has declared that this facility is accessible to all in compliance with the ADA / Title II. However, persons in need of ADA / Title II accommodations should contact Angela Rudikoff by phone at (617) 973-7005 or email to angela.rudikoff@state.ma.us. Requests must be made at least 10 days prior to the date of the public meeting.

In case of inclement weather, meeting cancellation announcements will be posted on the internet at <http://www.massdot.state.ma.us/Highway/>

LUISA PAIEWONSKY
HIGHWAY DIVISION ADMINISTRATOR

FRANK A. TRAMONTOZZI, P.E.
CHIEF ENGINEER

Boston, Massachusetts



DEVAL L. PATRICK
GOVERNOR
TIMOTHY P. MURRAY
LT. GOVERNOR
JEFFREY B. MULLAN
SECRETARY & CEO
LUISA PAIEWONSKY
DIVISION ADMINISTRATOR



Dear Concerned Citizen:

The Massachusetts Department of Transportation (MassDOT) is committed to building and maintaining a transportation infrastructure that is both safe and efficient for all who use our roadways, bridges, bicycle facilities and pedestrian paths, while maintaining the integrity of the environment.

As part of the design process for this project, we are conducting this public hearing to explain the proposed improvements, listen to your comments and answer any questions you may have. At the conclusion of the hearing, MassDOT will review all of your comments and, where feasible, incorporate them into the design of the project.

We recognize that road and bridge construction can create inconveniences for the public. MassDOT places a great deal of emphasis on minimizing the temporary disruptive effects of construction.

MassDOT encourages input from local communities and values your opinions. Please be assured that we will undertake no project without addressing the concerns of the community.

Sincerely,

A handwritten signature in blue ink, appearing to read "Luisa Paiewonsky".

Luisa Paiewonsky
Highway Division Administrator

www.mass.gov/massdot

TEN PARK PLAZA • BOSTON, MA 02116-3969 • PHONE: 617.973.7000 • FAX: 617.973.8031 • TDD: 617.973.7306

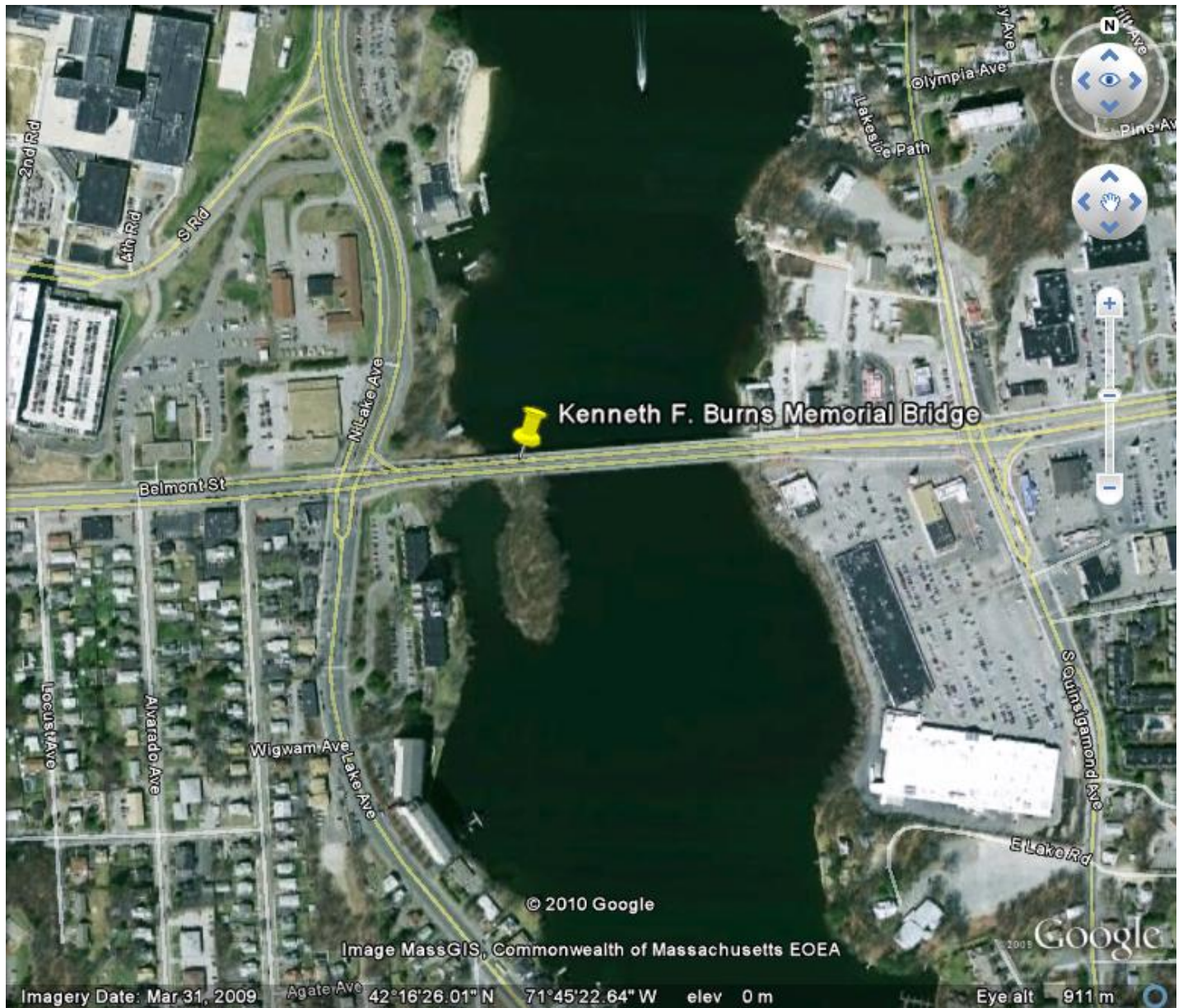


Figure 1:

**Site Locus Plan
Bridge No. S-14-001=W-44-018
Shrewsbury/Worcester, Massachusetts**

Project Location

MassDOT proposes to replace the current Kenneth F. Burns Memorial Bridge that carries Route 9 over Lake Quinsigamond between Worcester and Shrewsbury, Massachusetts.

Purpose

The purpose of the project is to replace the structurally deficient and functionally obsolete bridge. The project involves replacement of the existing structure with a new bridge that will meet current design standards of increased capacity for traffic with improved bicycle and pedestrian accommodations in the same location.

Existing Conditions

The current Kenneth F. Burns Memorial Bridge, the fifth crossing of Lake Quinsigamond, constructed in 1916, is a reinforced concrete deck arch-type bridge consisting of five arch spans. The Bridge links Worcester and Shrewsbury via State Route 9, which carries more than 47,000 vehicles per day. This portion of Lake Quinsigamond is navigable to recreational vessels including power and sail boats and crew shells. Significant crew activity, including major regattas takes place adjacent to this location on the lake.

Inspection and evaluation of the existing structural integrity of the bridge has been performed and has determined that the existing bridge is in poor condition. In several areas the existing deteriorated condition has required emergency repair and support of structural members. Material testing of the concrete bridge has been performed as well in order to evaluate the potential of re-using the bridge. The results of this material testing indicate that the existing concrete is in poor condition and would require continuous maintenance and repair if re-used. The current bridge has been repaired and rehabilitated several times throughout the past ninety-four years. MassDOT has determined that the bridge has deteriorated beyond the point of repair and must be replaced.

Scope of Work

MassDOT has selected a consultant team led by TranSystems to provide a bridge type study and sketch plans that will lead to a twenty-five percent design-build procurement package for the Kenneth F. Burns Memorial Bridge Replacement Project. The existing bridge will be replaced with a new widened structure. Bridge types under consideration include a steel or concrete haunched (arched) girder bridge, a deck arch bridge or a through arch bridge. The proposed lane configuration will provide three travel lanes in both directions with exclusive left and right-turn lanes on the westbound approach into Worcester. The eastbound approach into Shrewsbury will match the current configuration. Bicycle accommodating shoulders and sidewalks will be provided in both directions. The design seeks to create a new bridge that will accommodate all users while minimizing impacts to the intersections or the homes and business on either side of the bridge adjacent to the state highway layout line in Worcester and Shrewsbury. The proposed roadway profile will be raised in order to provide improved vertical under-clearance for recreational users.

Environmental Review

MassDOT is committed to the performance of a full environmental review process for this project in compliance with all applicable federal and state regulations. This will include preparation of the required documentation in accordance with the National Environmental Policy Act (NEPA) and the Massachusetts Environmental Policy Act (MEPA). As part of this review process, a comprehensive public participation program is being implemented. This outreach program will keep the public updated on the project's status, seek public input, support the regulatory process, and offer coordinated meetings for elected and municipal officials.

Schedule

The design and construction of the bridge will be managed and overseen by MassDOT. The twenty-five percent design-build procurement package is scheduled to be complete by early 2011. Design-Build Procurement/Construction will begin shortly thereafter and is anticipated to be completed by 2015 (including final design). The project contractor will be required to maintain two lanes of traffic in each direction during peak hours and pedestrian traffic over the bridge during construction.

For more information, please visit the project website at www.mass.gov/massdot/kenburnsbridge. Or if you have questions or concerns, please contact Stephanie Boundy, Public Outreach Coordinator for the Accelerated Bridge Program at (617) 973-8049.

BURNS 9 BRIDGE

REPLACEMENT PROJECT



OVERVIEW

The Kenneth F. Burns Bridge: The Kenneth F. Burns Bridge is a concrete deck arch span bridge comprised of a total of six arches and a viaduct. The bridge carries Massachusetts Route 9, known in the project area as Belmont Street or Turnpike Road, over Lake Quinsigamond, between the City of Worcester and the Town of Shrewsbury.

Role: Route 9, and the Burns Bridge, both play a major role in the local and regional transportation network. According to traffic counts obtained in July, 2008, a total of 47,700 cars travel over the Burns Bridge each weekday.

Project History: Originally constructed in 1916, the Burns Bridge was the fifth crossing of Lake Quinsigamond to be built. The current bridge has been repaired and rehabilitated several times throughout its lifespan. Analysis undertaken by MassDOT Highway Division in 2008 showed that the current bridge has deteriorated beyond repair and must be replaced. MassDOT will work with the community build a replacement bridge that meets their needs.

Project Goal: To select a bridge type that will provide for a speedy, cost-effective, and aesthetically pleasing replacement for the Burns Bridge so that Route 9 can continue to carry local and regional traffic safely and effectively.

Project Cost: Approximately \$137 Million. 80% of the funding will be provided by the Federal Highway Administration with the remaining 20% coming from MassDOT Division of Highways.

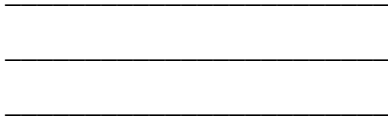
Project Timeline: The project is currently in the pre-25% design phase. Construction is expected to begin in 2011.

An Accelerated Bridge: The Accelerated Bridge Program commits \$3 Billion over the next eight years to repair or replace structurally deficient bridges in Massachusetts. The Burns Bridge will be replaced under this program using a "design/build" approach that will minimize disruption associated with project and help to contain costs.

Keeping Traffic Flowing: Given the major role played by Route 9, MassDOT Highway Division will ensure that traffic continues to flow during construction. At this time, the project's design team is analyzing different ways to accomplish this goal ranging from lane shifts on the existing structure to creation of a full temporary bridge. Some disruption to traffic flow is inevitable during this necessary replacement however the Highway Division will work to keep it to a minimum throughout construction.

Public Involvement: The bridge plays a major role in the day-to-day lives of local residents and area commuters. A number of properties closely abut the Burns Bridge. Lake Quinsigamond is heavily used by recreational and sport boaters. MassDOT Highway Division is committed to the meaningful involvement of all stakeholders. Later this year, the Highway Division will launch a website that will allow users to sign up for email alerts regarding the project, read about the progress of work, and submit comments to the project team. Should you wish to be placed on future informational mailing lists, please feel free to contact **Stephanie Boundy** by telephone (617) 973-8049 or by e-mail at stephanie.boundy@state.ma.us.

Please Fold and Tape



Please Place
Appropriate
Postage Here

Frank A. Tramontozzi, P.E.
Chief Engineer
MassDOT Highway Division
10 Park Plaza
Boston, MA 02116-3973

RE: Public Information Meeting
Kenneth F. Burns Memorial Bridge
Shrewsbury-Worcester, MA
Project File no. 604729

